



12147 S CICERO AVENUE

Alsip, Illinois



AREA

1,500FT²



REFERENCE NUMBER

11611335



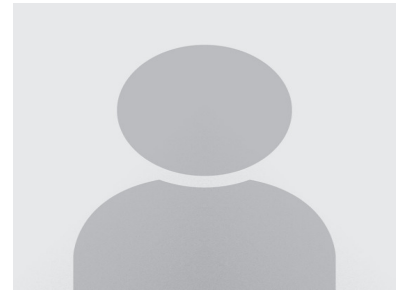
YEAR BUILT

1960

PRICE: USD 2,500

SUMMARY

LOOKING FOR A SPACE TO CONDUCT FAITH SERVICES, AND SIMILAR ACTIVITIES IN THE BASEMENT OF THIS MAGNIFICENT CORNER PROPERTY WITH DEEP LOT FOR OVER 300 CARS PARKING, 4500 SF BUILDING & SINGLE FAMILY ANNEX BUILDING. BIG FRONTAGE ALONG CICERO AVE., FAST I-294 ACCESS ON THE CENTRAL BUSINESS DISTRICT, GREAT TRAFFIC EXPOSURE.



CHRIS OSINUBI

1736 Fiddymment Dr - Romeoville, Illinois

chris_osinubi@yahoo.com

<https://proxio.page.link/RAH9uNe9TV7nG2UHA>

LANGUAGES I SPEAK:

English

